

### FASTER DEPLOYMENT

Eliminates complex, costly custom integration projects.

### RAPID MODIFICATIONS

New integrations can be implemented in hours using a point & click interface.

### BETTER FIELD SERVICE

More robust access to the information users need to provide superior customer experiences.

### ENHANCED BUSINESS INTELLIGENCE

More comprehensive and timely access to key data for reporting, analytics and dashboards.

### MORE SERVICE REVENUE

Efficient integration with CRM and Marketing Automation systems to drive increased revenue and create new revenue streams.

Intelligent field service management requires bi-directional sharing of key information and services from any number of enterprise systems starting with ERP and CRM but generally requiring additional applications - knowledge management, document management, supply chain management, marketing automation, and more. For most organizations, this means a multi-platform, multi-application integration effort requiring significant up-front investment and considerable ongoing costs for modifications as business requirements change.

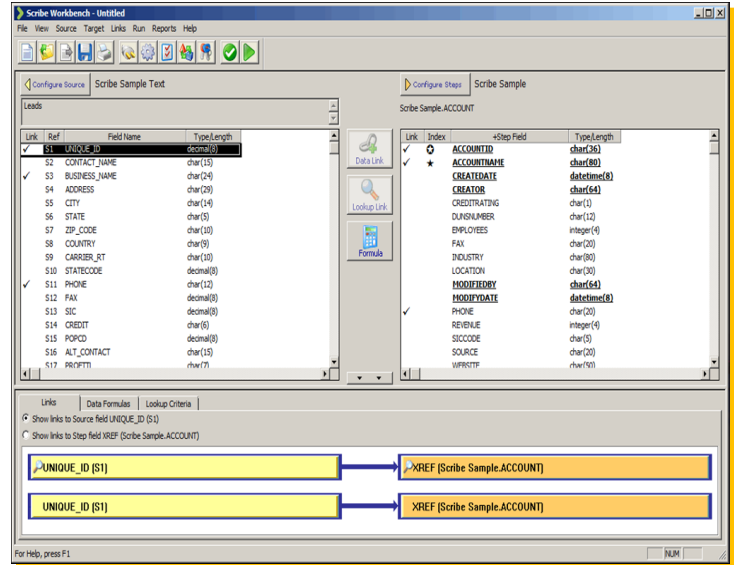


Sky Simplified Integration (SSI) leverages technology from Scribe Software and Magic Software, leaders in enterprise data integration. It provides a no-coding solution to integrate virtually any application, data source, or Software as a Service (SaaS) platform. SSI eliminates the complex custom integration projects that delay the deployment times and bloat the implementation costs of alternative field service management solutions. It provides a more agile solution as changes can be managed in-house with a point and click interface and deployed in hours.

Beyond the obvious benefits of a less expensive, faster deployment, Sky allows you to stretch your integration budget and implement a more extensive integration solution supporting more robust capabilities. This enables superior customer service as well as a more comprehensive data set for enhanced reporting and analytics. Better CRM and Marketing Automation Platform integration provides the power to drive revenue growth through existing and new revenue streams.

- ◆ **Consistent adapter model** - The core integration design environment can view all applications in the same way, while presenting information that is unique to each application for precise, efficient results.
- ◆ **Open connectivity** - The foundation for integrating core business systems with a wide variety of applications and data stores that are unique to each enterprise.
- ◆ **Configurable templates** - Reusable integration modules that can be assembled and reassembled for multiple integrations, easily accommodating change with simple reconfigurations.
- ◆ **No custom coding** - Our unique integration toolset enables business or data analysts to quickly design and deploy sophisticated integration solutions without tapping IT resources.

- Automation of common tasks such as assigning primary ID values, setting default values, validating input data, and setting object relationships; all designed to eliminate run-time errors and provide for greater data integrity.
- Dynamic discovery of objects or fields that present the unique configuration of each application or database instance to the SSI (Sky Simplified Integration) Console and Workbench without requiring recoding or recompiling.
- Integration of application and database messages to provide detailed exception handling and reporting from the SSI Console's single point of management.
- Assignment of primary ID and default field values, validation of input data, automatic population of summary and join tables.
- Support for custom entities, attributes, and relationships.
- The Publisher for Sky creates XML messages from changes that happen in Sky. In the publisher's user interface you configure the entities that you want published without writing code.
- Support for Sky Workflow.



- Picklist viewer and picklist validation for Sky drop-down lists. Set any picklist field by its internal value or its user friendly name.
- A query builder that can join objects, filter, and order when connecting to Sky as a source.
- Creating and removing custom many- to- many relationships between records in the Sky system.
- A troubleshooting feature that captures the request and response communication between the adapter and the SKY server as XML files.

### PLATFORMS INCLUDE:

SAP R/3	Dynamics AX
mySAP	Dynamics NAV
SalesForce.com	Dynamics GP
Oracle ERP (Siebel)	Dynamics SL
Oracle CRM	

